

MAXIMATOR®

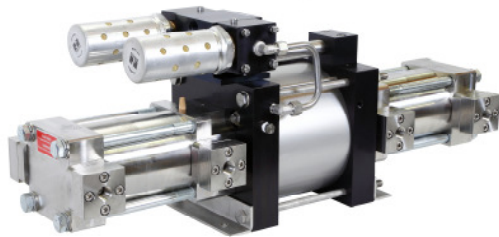
Maximum Pressure.



High Pressure Technology • Testing Equipment
Hydraulics • Pneumatics

Technical Data Sheet

Gas booster 8 DLE 1,65



8 DLE 1,65
double acting, single air drive head
single stage

Technical Data:

Air drive pressure pL:	1-10 bar / 14,5 - 145psi
Pressure ratio i:	1:1,65
Compression ratio	1:10
Minimum suction pressure pA:	0 bar
Maximum suction pressure pA:	100 bar
Maximum outlet pressure pB:	100 bar
Displacement volume/double stroke:	4100 cm ³
Maximum cycles:	80 / min
Stall pressure:	$PB = i * pL + pA$

Standard Connections:

Air drive:	3/4" BSP
Inlet/Outlet:	1/2" BSP
Maximum operating temperature	100°C
Net weight:	110 kg

Pressure and flow performances, please see enclosed graph.

Materials of construction hp section:

Standard seal package:	PTFE, Viton
Compressor head:	1.4305
HP cylinder:	1.4404
HP piston:	1.4305
Fittings:	1.4305
Balls:	1.4034
Springs:	Inconel X750

Approximate Dimensions:

Length:	815 mm
Width:	246 mm
Height:	316 mm

Available Accessories:

Air control units with filter pressure regulator, control pressure gauge and shut off valve:	8 DLE 1,65 with C2
To protect the booster against excessive outlet pressures or to limit the outlet pressure, a safety valve can be fitted to the air control unit in the air drive line:	8 DLE 1,65 with C2/SVair (The required outlet pressure has to be indicated.)

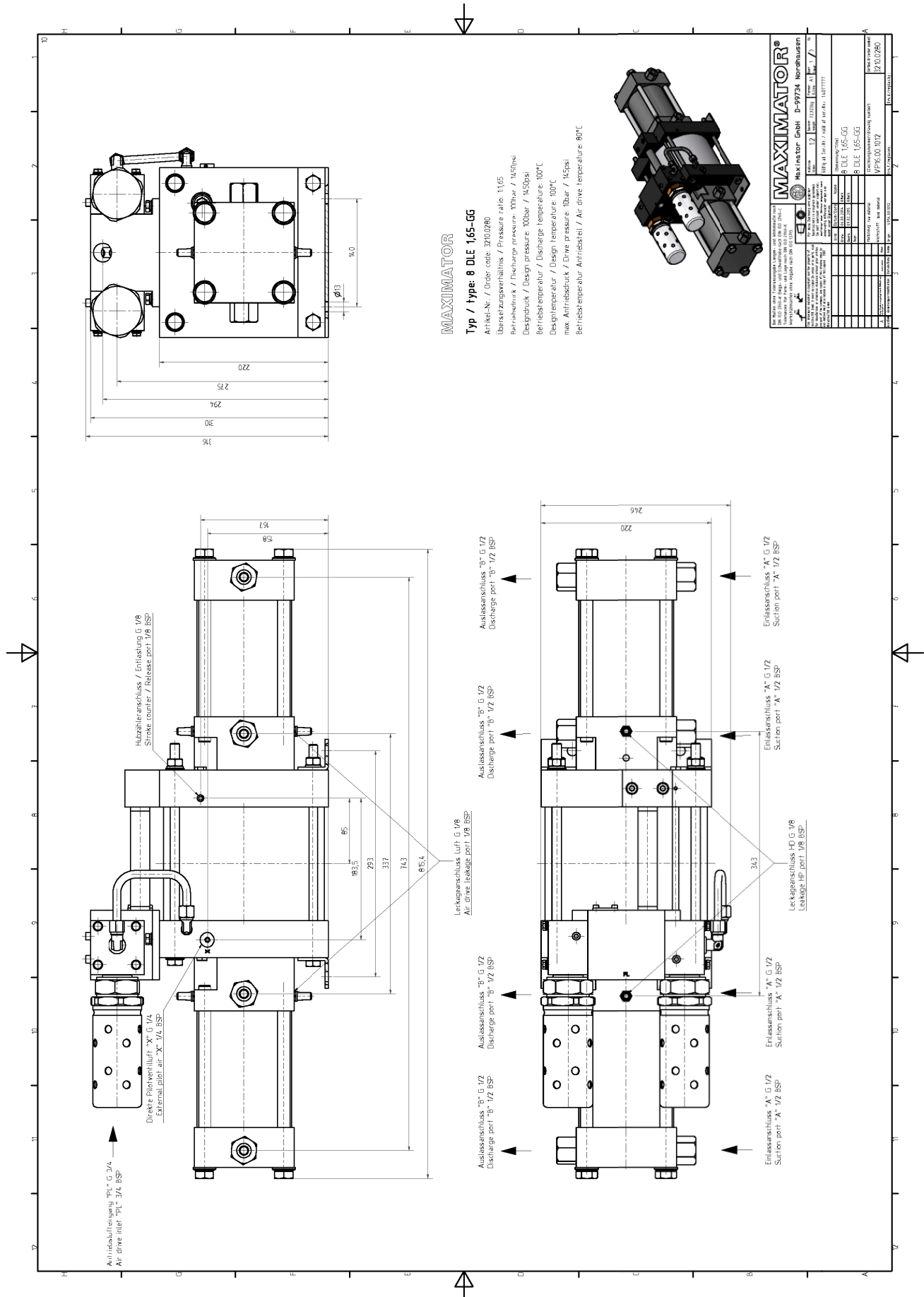
Please consult factory for more information. All technical and dimensional information subject to change. All General Terms and Conditions of sale, including limitations of our liability, apply to all products and services sold.

MAXIMATOR®

Maximum Pressure.



High Pressure Technology • Testing Equipment
Hydraulics • Pneumatics



MAXIMATOR

Typ / type: **8 DLE 1.65-GG**

Artikel-Nr. / Order code: **370.0280**

Übersetzungsverhältnis / Pressure ratio: **1:65**

Betriebendruck / Operating pressure: **Einbar / 160psi**

Designdruck / Design pressure: **100bar / 1450psi**

Betriebstemperatur / Discharge temperature: **100°C**

Design temperature / Design temperature: **100°C**

max. Antriebsdruck / Drive pressure: **10bar / 145psi**

Betriebstemperatur Antriebsluft / Air drive temperature: **80°C**

MAXIMATOR®	
Maximator GmbH D-99734 Nordhausen	
<small>Die Rechte der Maximator-Lieferung sind Eigentum der Maximator GmbH Nordhausen. Nachdruck, Vervielfältigung und Verbreitung, auch auszugsweise, ist ohne schriftliche Genehmigung der Maximator GmbH Nordhausen.</small>	
<small>MAXIMATOR is a registered trademark of Maximator GmbH Nordhausen. All other trademarks are the property of their respective owners.</small>	
Typ / Type: 8 DLE 1.65-GG Artikel-Nr. / Order code: 370.0280 Druck / Pressure: 100 bar / 1450 psi Übersetzungsverhältnis / Pressure ratio: 1:65	Maximator GmbH Lange Str. 6 D-99734 Nordhausen Germany Tel: +49 3631 9533-0 Fax: +49 3631 9533-5010 E-Mail: info@maximator.de
Zeichnung / Drawing: 370.0280 Maßstab / Scale: 1:1 Datum / Date: 12.05.2015 Zeichner / Drafter: MAA Geprüft / Checked: MAA Freigegeben / Released: MAA Konstruktionsbereich / Design department: 8 DLE 1.65-GG Fertigung / Production: VPR.00.1012 Material / Material:	Zeichnung / Drawing: 370.0280 Datum / Date: 12.05.2015 Zeichner / Drafter: MAA Geprüft / Checked: MAA Freigegeben / Released: MAA Konstruktionsbereich / Design department: 8 DLE 1.65-GG Fertigung / Production: VPR.00.1012 Material / Material:

MAXIMATOR®

Maximum Pressure.



High Pressure Technology • Testing Equipment
Hydraulics • Pneumatics

