

MAXIMATOR®

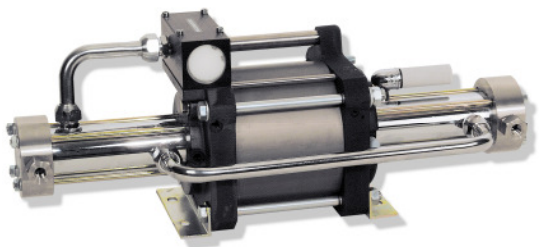
Maximum Pressure.



High Pressure Technology • Testing Equipment
Hydraulics • Pneumatics

Technical Data Sheet

Gas booster DLE 5



DLE 5
double acting, single air drive head
single stage

Technical Data:

Air drive pressure pL:	1-10 bar / 14,5 - 145psi
Pressure ratio i:	1:5
Compression ratio	1:15
Minimum suction pressure pA:	2
Maximum suction pressure pA:	100 bar
Maximum outlet pressure pB:	100 bar
Displacement volume/double stroke:	746 cm ³
Maximum cycles:	110 / min
Stall pressure:	$PB = i \cdot pL + pA$

Standard Connections:

Air drive:	3/4 BSP
DLE 5 (-GG)	Inlet/Outlet: 1/2 BSP
Maximum operating temperature	60°C
Net weight:	20 kg

Pressure and flow performances, please see enclosed graph.

Materials of construction hp section DLE 5:

Standard seal package:	PTFE, FKM
Compressor head:	Aluminium anodised
HP cylinder:	Aluminium hardcoated
HP piston:	1.4305
Fittings:	1.4305
Balls:	1.4034
Springs:	1.4310

Approximate Dimensions:

Length:	598 mm
Width:	181 mm
Height:	273 mm

Available Options:

Inert gas service (standard)	DLE 5 (-GG)
Oxygen service:	DLE 5-GG-S
CO ₂ service:	DLE 5-GG-C
In-/Outlet: 3/8NPT	DLE 5-NN

Available Accessories:

Air control units with filter pressure regulator, control pressure gauge and shut off valve:	DLE 5 with C2
To protect the booster against excessive outlet pressures or to limit the outlet pressure, a safety valve can be fitted to the air control unit in the air drive line:	DLE 5 with C2/SVair (The required outlet pressure has to be indicated.)

Please consult factory for more information. All technical and dimensional information subject to change. All General Terms and Conditions of sale, including limitations of our liability, apply to all products and services sold.

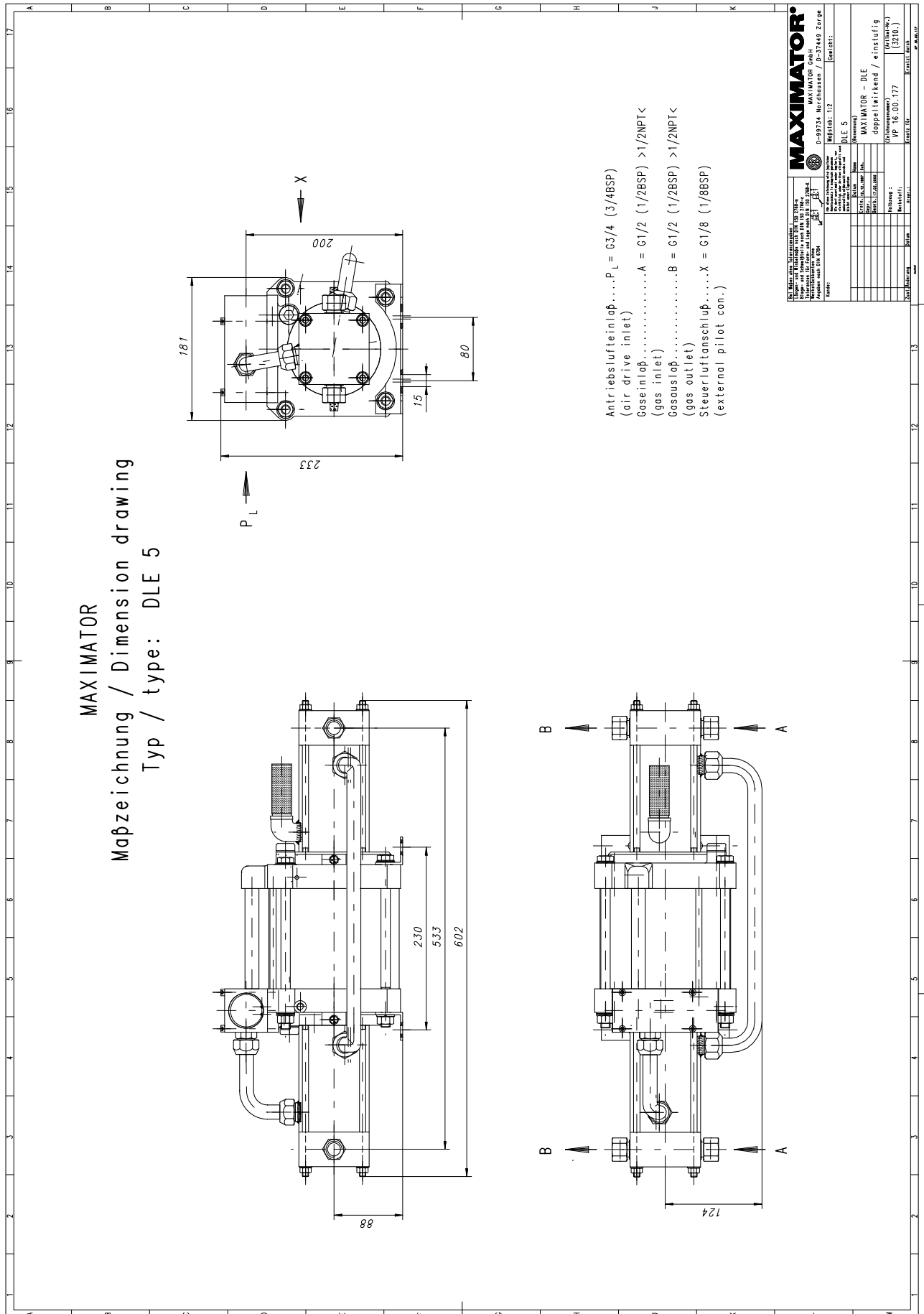
MAXIMATOR®

Maximum Pressure.



High Pressure Technology • Testing Equipment
Hydraulics • Pneumatics

MAXIMATOR
Maßzeichnung / Dimension drawing
Typ / type: DLE 5



MAXIMATOR®

Maximum Pressure.



High Pressure Technology • Testing Equipment
Hydraulics • Pneumatics

