

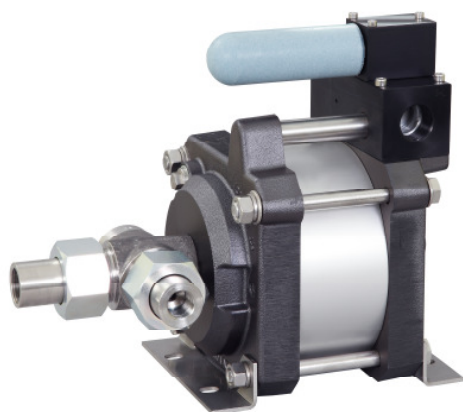
MAXIMATOR®

Maximum Pressure.



High Pressure Technology • Testing Equipment
Hydraulics • Pneumatics

Technical Data Sheet



G250 (L)
single acting, single air drive head, side inlet
(Standard= Bottom inlet, see dimension drawing)

G250 (L)

» Oil service

G250 (L) VE

» Water service

Technical Data:

| | |
|---|------------------------------------|
| Air drive pressure: | 1-10 bar / 14,5 - 145psi |
| Calculated Outlet Pressure at an air drive of 10 bar/145 psi: | 2,650 bar/ 38,425 psi |
| Pressure ratio: | 1:265 |
| Displacement volume/double stroke | 3.8 cm ³ / 0.23 cu.inch |

Connections:

| | |
|--------------------------------|--------------------------------|
| Inlet: | Standard: Bottom Inlet 1/2 BSP |
| Outlet: | 9/16-18UNF |
| Air drive: | 3/4 BSP |
| Maximum operating temperature: | 60°C |
| Net weight: | 13.5 kg |

Pressure and flow performances, please see enclosed graph.

Wetted materials of construction:

| | |
|---------------|---|
| Seal package: | G250(L): Polyurethan, NBR G250(L)VE: UHMWPE, FKM |
| Pump Body: | 1.4313 |
| Piston: | 1.4112 (hardened) |
| Fittings: | 1.4122 |

Approximate Dimensions:

| | |
|---------|----------|
| Height: | 300 mm |
| Depth: | 193.5 mm |
| Width: | 272 mm |

Available Options:

| | |
|--|------------------------------|
| Seal material for oil service: | G250 (L) |
| Seal material for water service: | G250(L)VE |
| Side inlet | G250(L)S/ G250(L)VES |
| Special inlet and outlet ports, i.e. NPT | G250(L)-NPT G250(L)VE-NPT |

Special seal material to handle special fluids on request.

Available Accessories:

| | |
|---|---|
| Air control units with filter pressure regulator, control pressure gauge and shut off valve: | G250(L) with C2 |
| To protect the pump against excessive outlet pressures or to limit the outlet pressure, a safety valve can be fitted to the air control unit in the air drive line: | G250(L) with C2/SVair (The required outlet pressure has to be indicated.) |

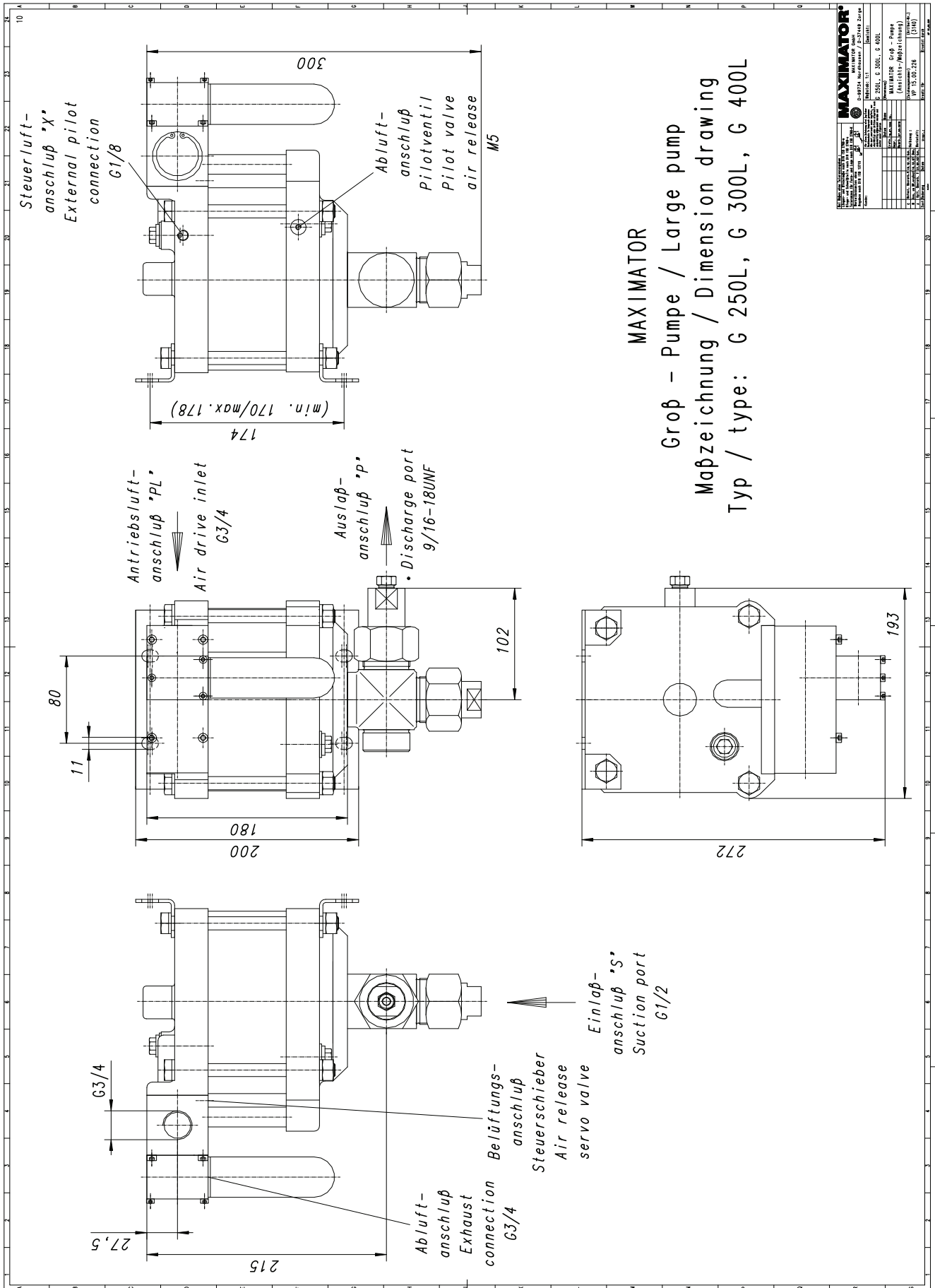
Please consult factory for more information. All technical and dimensional information subject to change. All General Terms and Conditions of sale, including limitations of our liability, apply to all products and services sold.

MAXIMATOR®

Maximum Pressure.



High Pressure Technology • Testing Equipment
Hydraulics • Pneumatics





High Pressure Technology • Testing Equipment
Hydraulics • Pneumatics

Leistungsdiagramm/Performance Graph G 250

Prüfflüssigkeit/Test Liquid: Wasser-Öl-Emulsion/Water Oil Emulsion ca. 1 - 10 cst

