

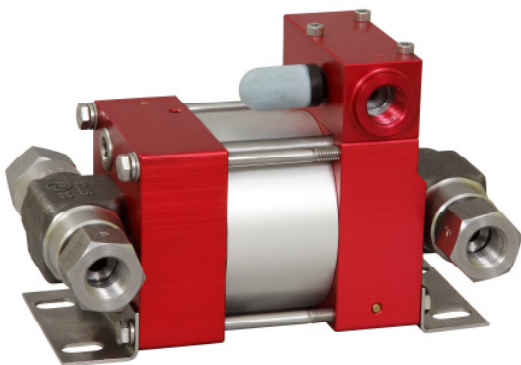
MAXIMATOR®

Maximum Pressure.



High Pressure Technology • Testing Equipment
Hydraulics • Pneumatics

Technical Data Sheet



M72D
double acting, single air drive head
(Standard= Side inlet)

M72D

» Oil service

M72DVE

» Water service

Technical Data:

Air drive pressure:	1-10 bar / 14,5 - 145psi
Calculated Outlet Pressure at an air drive of 10 bar/145 psi:	860 bar/ 12,470 psi
Pressure ratio:	1:86
Displacement volume/double stroke	3.8 cm ³ / 0.18 cu.inch

Connections:

Inlet:	Standard: Side Inlet 3/8 BSP
Outlet:	3/8 BSP
Air drive:	3/8 BSP
Maximum operating temperature:	60°C
Net weight:	3.7 kg

Pressure and flow performances, please see enclosed graph.

Wetted materials of construction:

Seal package:	M72D: Polyurethan, NBR M72DVE: UHMWPE, FKM
Pump Body:	1.4305
Piston:	1.4112 (hardened)
Fittings:	1.4104

Approximate Dimensions:

Height:	195 mm
Depth:	104 mm
Width:	112 mm

Available Options:

Seal material for oil service:	M72D
Seal material for water service:	M72DVE
Liquid inlet	Standard: side inlet, bottom inlet not available
Special inlet and outlet ports, i.e. NPT	M72D-NPT M72DVE-NPT

Special seal material to handle special fluids on request.

Available Accessories:

Air control units for M series with filter pressure regulator, control pressure gauge and shut off valve: M72D with C1

To protect the pump against excessive outlet pressures or to limit the outlet pressure, a safety valve can be fitted to the air control unit in the air drive line: M72D with C1/SVair (The required outlet pressure has to be indicated.)

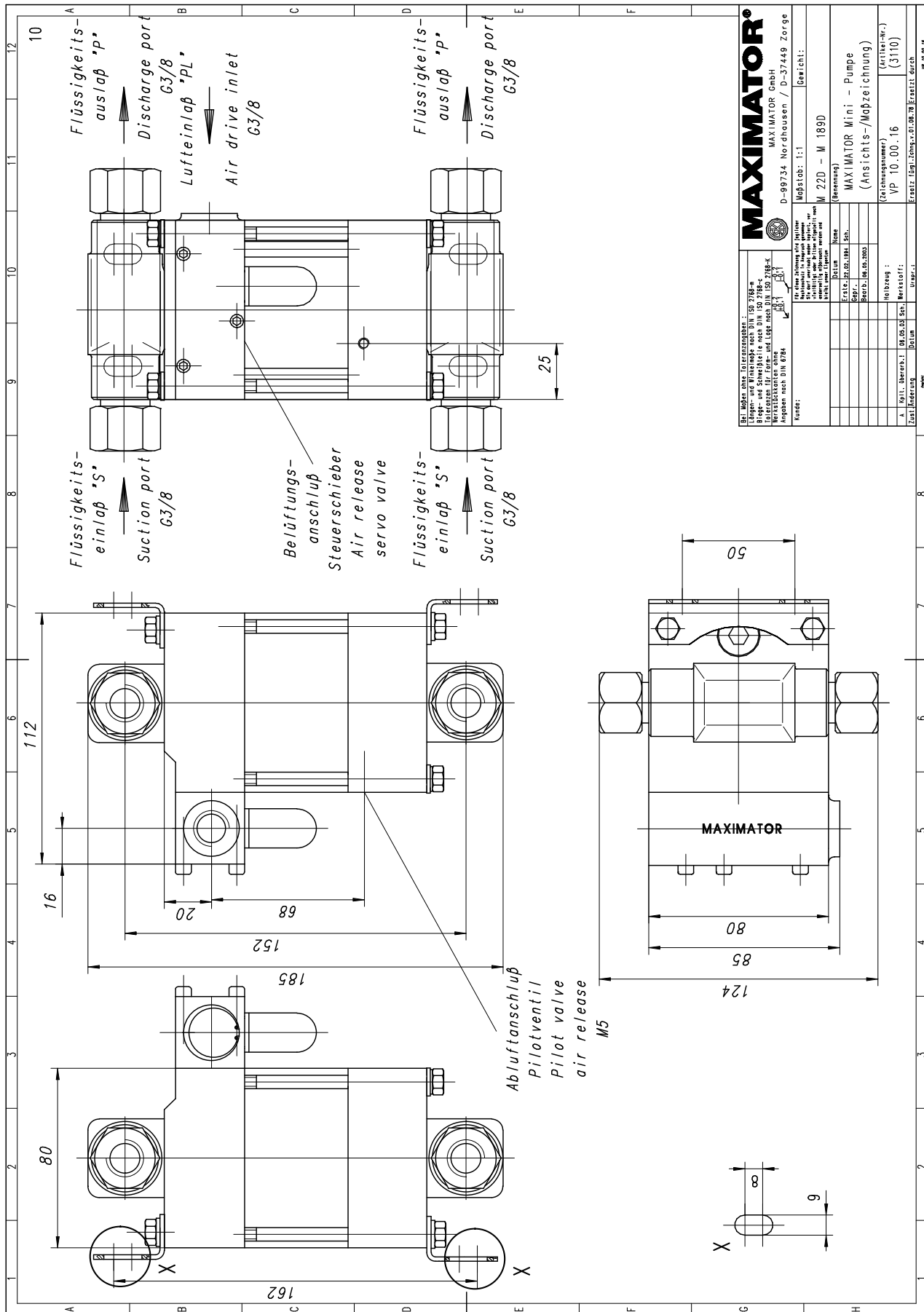
Please consult factory for more information. All technical and dimensional information subject to change. All General Terms and Conditions of sale, including limitations of our liability, apply to all products and services sold.

MAXIMATOR®

Maximum Pressure.



High Pressure Technology • Testing Equipment
 Hydraulics • Pneumatics



Leistungsdiagramm/Performance Graph M(O) 72 D

Prüfflüssigkeit/Test Liquid: Wasser-Öl-Emulsion/Water Oil Emulsion ca. 1 - 10 cst

